

# Air Cylinder/Direct Mount Type: Double Acting

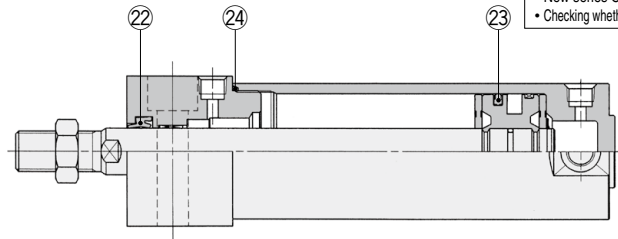
# CG1R Series

ø20, ø25, ø32  
ø40, ø50, ø63

The Replacement Procedure is on p. 378

## Construction

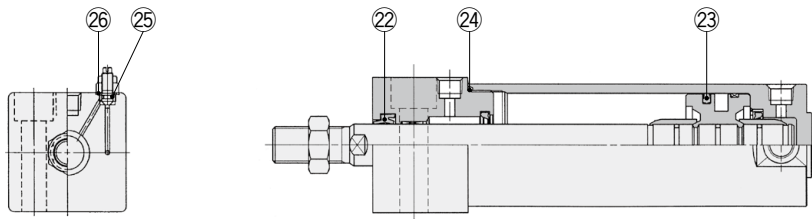
### Standard, bottom mounting, with rubber bumper



The production of this series has been discontinued. Check the following before ordering.

- New series CG1R-Z → p. 31
- Checking whether the cylinder is a new or a previous model → p. 769, 770

### With air cushion



\* The numbers correspond with those in the "Construction" of the CG1R series in the **Web Catalog**.

### Seal Kit List

No.	Description	Material	Note
22	Rod seal	NBR	
23	Piston seal		
24	Tube gasket		
25	Valve seal		
26	Valve retainer gasket		

### Disassembly/Replacement

## ⚠ Caution

#### 1. Do not replace the bushings.

The bushings are press-fit. To replace them, they must be replaced together with the cover assembly.

#### 2. To replace a seal, apply grease to the new seal before installing it.

If the cylinder is put into operation without applying grease to the seal, it could cause the seal to wear significantly, leading to premature air leakage.

#### 3. Cylinders with ø50 or larger bore sizes cannot be disassembled.

When disassembling cylinders with bore sizes ø20 through ø40, grip the double flat part of either the head cover or the rod cover with a vise and loosen the other side with a wrench or a monkey wrench, etc., and then remove the cover. When re-tightening, tighten approximately 2 degrees more than the original position.

(Cylinders with ø50 or larger bore sizes are tightened with a large tightening torque and cannot be disassembled. If disassembly is required, please contact SMC.)

### Replacement Parts: Seal Kit

Bore size (mm)	Part no.	Contents
<b>With rubber bumper</b>		
20	CG1N20-PS	Set of nos. 22, 23, 24
25	CG1N25-PS	
32	CG1N32-PS	
40	CG1N40-PS	
<b>With air cushion</b>		
20	CG1A20-PS	Set of nos. 22, 23, 24, 25, 26
25	CG1A25-PS	
32	CG1A32-PS	
40	CG1A40-PS	

Note) Order with a part number for each type and bore size.

\* The seal kit includes a grease pack (10 g).

Order with the following part number when only the grease pack is required.

**Grease pack part no.: GR-S-010 (10 g)**