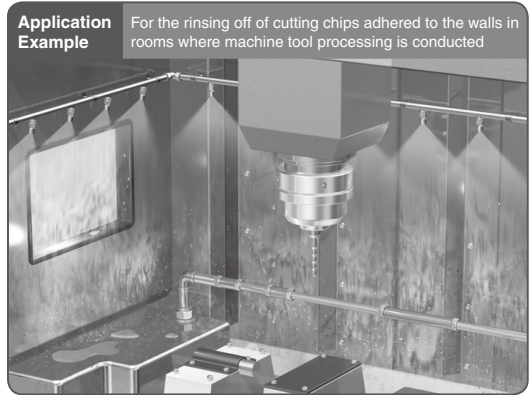
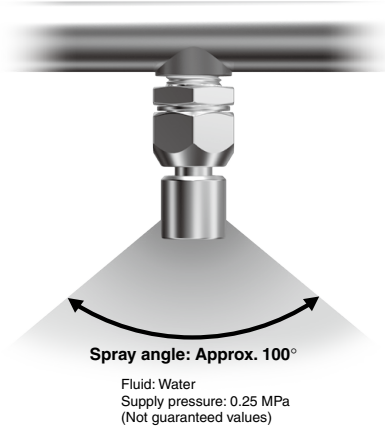


Wide Angle Blow Nozzle

IN-225 Series

RoHS

Capable of spraying a wide area with fluid



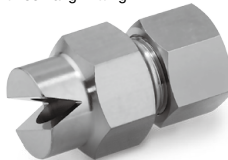
Variations

With male thread



IN-225-1054

With self-align fitting



IN-225-1056/1057/1059

Pivot nozzle with male thread



IN-225-1104

Specifications

Applicable tubing material	Flexible copper pipe (C1220T-O), OST pipe
Applicable tubing O.D.	ø10, ø12, ø16
Fluid	Coolant, Water, Air*1
Operating pressure	Coolant, Water
	Air
Ambient and fluid temperatures	0.3 MPa 1 MPa (0.3 MPa when connecting an OST pipe)
Seal on the threads	-5 to 60°C (No freezing)
Material	None
	Brass (With electroless nickel plating)

*1 For air, the blow will not be visibly fan shaped.

IN-225 Series

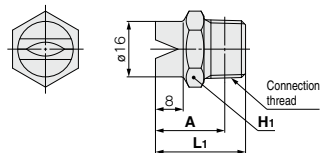
Nozzle with male thread/IN-225-1054

(mm)



Model	Nozzle size	Connection thread	Width across flats		L1	A*1	Weight [g]
			H1	H2			
IN-225-1054	ø6 equivalent	R3/8	19	—	26	20	28

*1 Reference dimensions after R thread installation



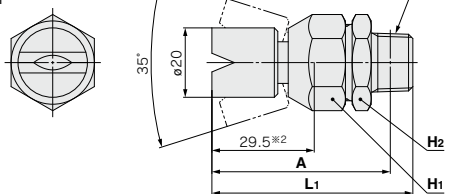
Pivot nozzle with male thread/IN-225-1104

(mm)



Model	Nozzle size	Connection thread	Width across flats		L1	A*1	Weight [g]
			H1	H2			
IN-225-1104	ø6 equivalent	R3/8	24	24	58	51.4	109

*1 Reference dimensions after R thread installation



*2 Indicates the length of the arc from the center axis of the joint

Nozzle with self-align fitting/IN-225-1056/1057/1059

(mm)



IN-225-1056



IN-225-1057



IN-225-1059

Model	Nozzle size	Applicable tubing O.D.	Width across flats		L1	M	Weight [g]
			H1	H2			
IN-225-1056	ø6 equivalent	ø12	19	19	28.3	17	34
IN-225-1057	ø6 equivalent	ø16	24	24	28.3	17	50
IN-225-1059	ø6 equivalent	ø10	19	17	35	17	47

