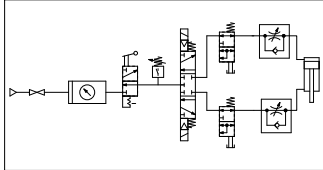


# Residual Pressure Release Valve with One-touch Fitting



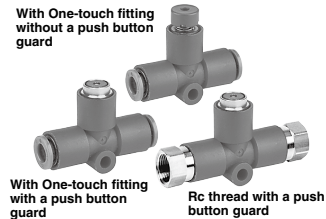
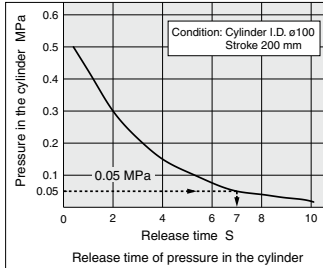
Residual pressure in the cylinder can be easily released with one push of the push button.

Example of circuit diagram (Residual exhaust of air cylinder)

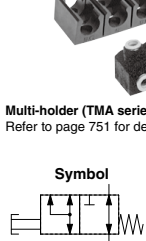


- Easy operation with a push button.
- Piping parts are available in two types: with One-touch fittings and with Rc thread. Applicable tubing diameter: ø6, ø8, ø10, ø12. Connection thread Rc: 1/4, 3/8.
- Residual pressure release time: Approx. 7 seconds (time required for the pressure to be 0.5 MPa to 0.05 MPa)

Example of air cylinder residual pressure release time



Multi-holder (TMA series) for fixing the KE□ series. Refer to page 751 for details.

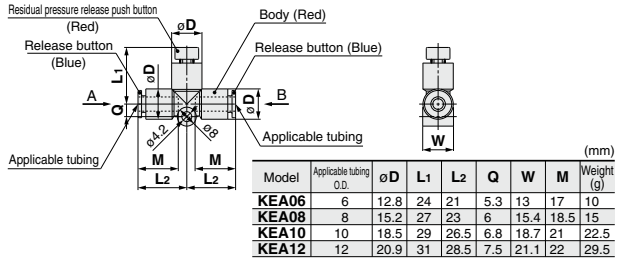


## Specifications

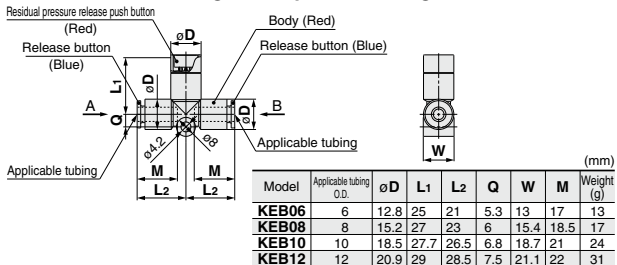
Model	Without a push button guard	KEA06	KEA08	KEA10	KEA12
	With a push button guard	KEB06	KEB08	KEB10	KEB12
	Rc thread with a push button guard	—	KEC-02	—	KEC-03
Applicable tubing O.D. or connection thread		ø6	ø8, Rc 1/4	ø10	ø12, Rc 3/8
Applicable tubing material	Nylon, Soft nylon, Polyurethane, FEP, PFA				
Fluid	Air				
Operating pressure range	0 to 1 MPa				
Ambient and fluid temperature	-5 to 60°C (No freezing)				
Effective area	Nylon	13.1 mm <sup>2</sup>	26.1 mm <sup>2</sup>	41.5 mm <sup>2</sup>	58.3 mm <sup>2</sup>
	Polyurethane	13.1 mm <sup>2</sup>	18.0 mm <sup>2</sup>	29.5 mm <sup>2</sup>	46.1 mm <sup>2</sup>
Residual pressure release effective area	1.8 mm <sup>2</sup>				
Color	Body	Red			
	Push button	Red			
	Release button (Tube connection part)	Blue			

## Dimensions

With One-touch fitting without a push button guard: KEA



With One-touch fitting with a push button guard: KEB



Rc thread with a push button guard: KEC

